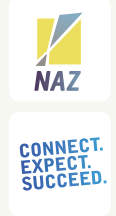


NORTHSIDE ACHIEVEMENT ZONE AS A PROMISE NEIGHBORHOOD



The NAZ Promise Neighborhood is a collaboration of over 50 organizations and schools who work with children and families in a geographic area, or “Zone” of North Minneapolis to build a culture of achievement so that all youth graduate college ready. Families and children move through a “cradle to career” pipeline that provides comprehensive support from pre-natal through age 18, through three pillars of impact:

PILLAR ONE: FAMILY ENGAGEMENT AND OPPORTUNITY ALIGNMENT

Engaging parents to strengthen their ability to build a culture of achievement in the home and aligning resources to support their success

NAZ is effective because families receive one-on-one support from the NAZ Engagement Team, made up of skilled “family coaches” from the North Minneapolis community. This includes a NAZ Connector to support whole-family stability and an Academic Case Manager to facilitate school achievement.

Through trusted relationships from trained individuals—from their own community—the Engagement Team inspires a new commitment from parents and solidifies the belief that their children will graduate from college. The Engagement Team works with parents to identify needs and barriers, set family goals, encourage behaviors that support academic outcomes, and connect them with promising and proven strategies to support success. They work side by side to propel NAZ kids effectively through the NAZ solutions to college and beyond.

PILLAR TWO: EDUCATION PIPELINE

Improving schools and the educational experience within a continuum of support services to produce academic excellence for all children

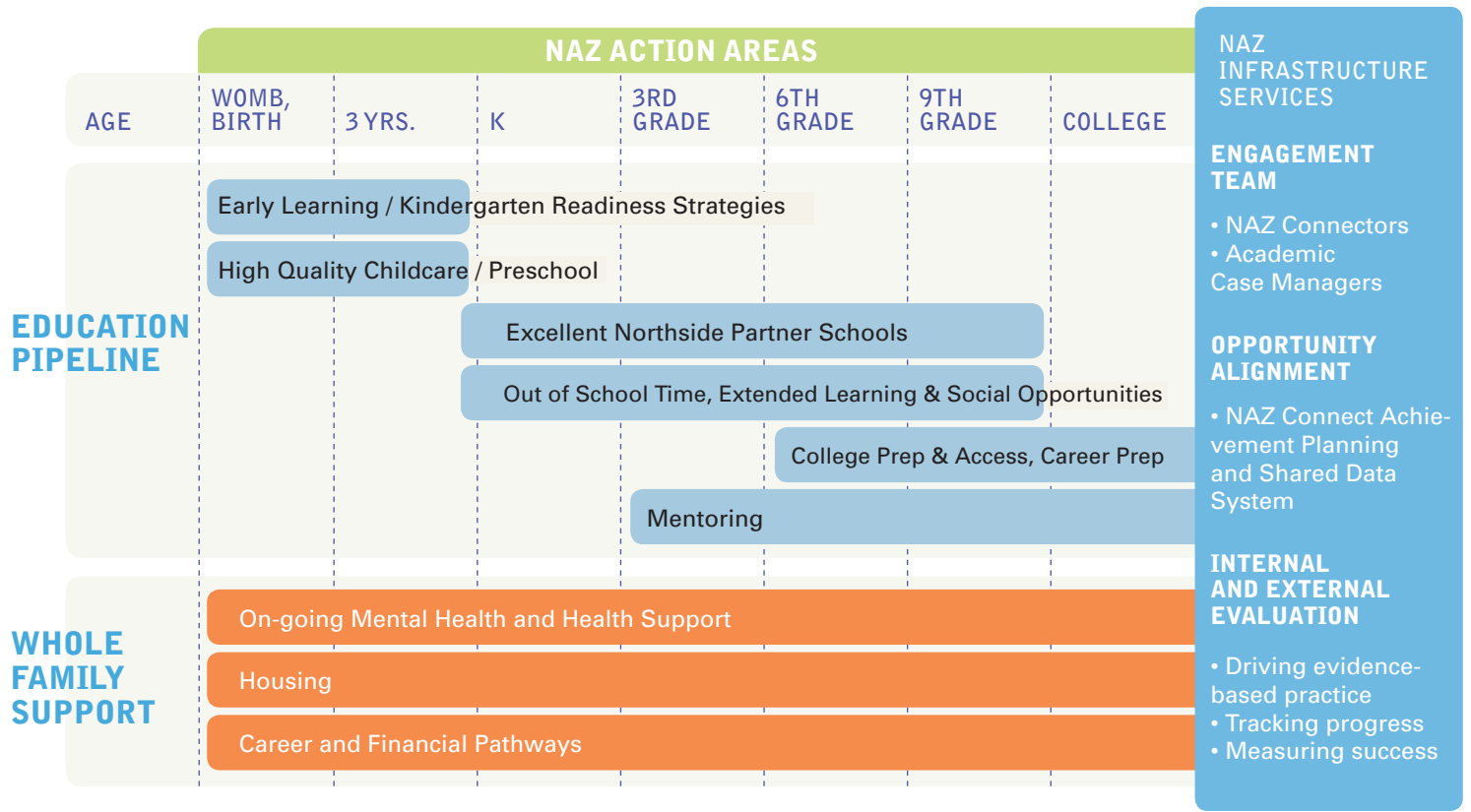
For the past year, NAZ school partners—including public district, public charter, and parochial—have been working together on groundbreaking reforms at the leadership level. In addition, the NAZ Education Pipeline is implementing strategies for NAZ-enrolled families such as early learning programs supporting kindergarten-readiness, academic-focused extended day programs (Out-Of-School Time), and matching NAZ-youth with mentors—all focused on college readiness and lifelong success.

PILLAR THREE: WHOLE FAMILY WRAP-AROUND SUPPORT

Supporting family success so NAZ children show up ready to learn

Successful families support successful children. The Engagement Team connects families with the right resources from partner organizations, based on their needs and goals. NAZ then coordinates these services to stabilize housing, establish and support a career path for parents, and address health and behavioral health challenges. Progress in these critical areas will help the whole family succeed, and allow the children to focus on achievement.

NAZ CONTINUUM



HOW NAZ WORKS— AN INTEGRATED EFFORT

NAZ operates as one integrated program across multiple organizational and school partners with NAZ families and students at the center. We achieve this through collective infrastructure strategies, including:

NAZ Connect is an online achievement-planning and data collection system that supports our high-touch approach. Families work with their Engagement Team to develop one set of goals within NAZ Connect that are supported across multiple providers. Families, schools, and organizations are now working together at every turn to provide opportunities, support and solutions to persistent challenges.

The NAZ Seal of Effectiveness is an internal evaluation program performance model lead by the University of Minnesota, designed to move all NAZ partners toward evidence-based practices in every aspect of our work. NAZ-sponsored interventions have detailed, evidence-based plans. These plans are reviewed by peers and receive ongoing scrutiny. If we are not effective, we will revise our plans until we get it right. External Evaluation through Wilder Research assures zone-wide impact is reached over time.

NAZ works as an intermediary to provide the collaborative with “infrastructure services” necessary for our education and nonprofit partners to work effectively together to help families and students. NAZ engages families and aligns the services of our program partners—providing both additional funding and the organizing framework needed for comprehensive, aligned, effective, and continuously improving practices.

OPERATING AS A PILOT — INITIAL SUCCESS!

NAZ operated as a pilot in 2010 and 2011, with the Engagement Team recruiting and supporting 150 pilot families who are representative of the Zone in their level of need. The pilot families are both recipients of programming and change agents for the community-wide transformation that is underway.

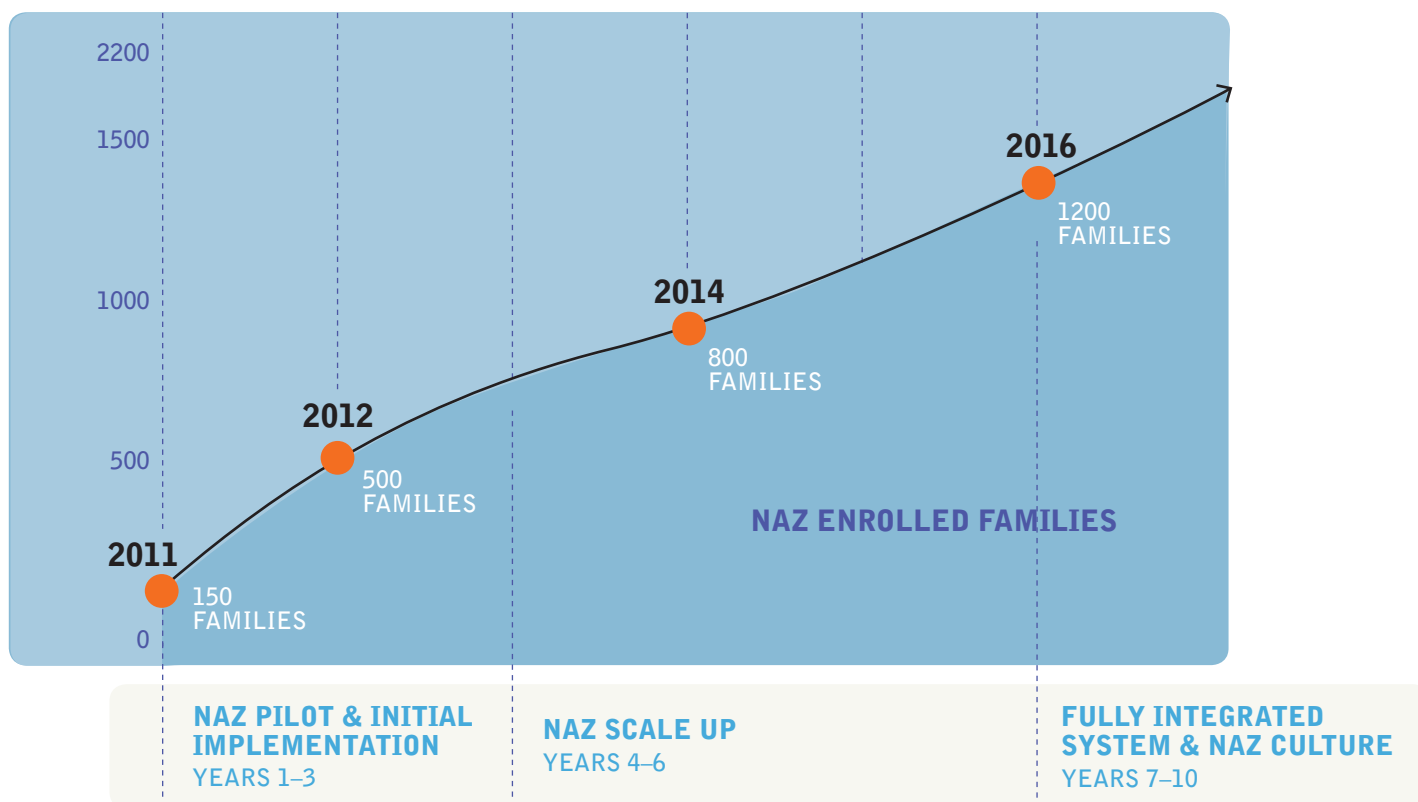
Pilot results are promising: Parents are setting and achieving education-focused goals—many for the first time; enrolling in and completing parent education classes at unprecedented rates; participating in high-quality early childhood education programs; stabilizing their housing; and setting their own improved career pathway plans.

SCALING UP AS A PROMISE NEIGHBORHOOD

The Promise Neighborhood funding, totaling \$28 million over five years, is the key to scaling up to our five-year goal of 1,200 families with 3,000 children—all successfully on a path to college. The funding will help to effectively connect these families with high-quality supports and to coordinate, evaluate, and improve services that drive academic success.

Promise Neighborhood funds will be used to scale up staff and solidify infrastructure, which will increase our capacity to enroll and support more families. Most new staff members will be located on-site at our partner organizations.

NAZ SCALE UP MODEL



The total NAZ budget of approximately \$5.6M from Promise Neighborhoods and \$1.3M from a growing pool of private funding will be used to:

1

Increase NAZ’s capacity to lead the collaborative and serve as an intermediary

- Hire and/or fund the following positions: CEO, COO, finance, fund development, HR, business, communications, volunteer recruitment, and administrative.
- Fund expansion of technology, facilities, staff training, and communications.
- Fund NAZ Manager contracts (partner leaders that oversee NAZ critical action areas).

2

Expand Engagement Team and increase coordination of services across partners

Build infrastructure at NAZ partner organizations and schools to help them fully utilize the NAZ Connect tool. Significantly increase the size the NAZ Engagement Team and locate team at partner organizations, where they will recruit and support families.

- Increase Engagement Team staff to 20 NAZ Connector and 20 Academic Case Managers
- Hire “Navigator” staff to increase NAZ Family access to opportunities in our action areas of housing, career/finance, Out-Of-School time, and early childhood education
- Upgrade the NAZ Connect tool and provide technology and training to ensure the tool is consistently and effectively utilized
- Hire internal and external evaluators to actively monitor our progress, measure success, and take corrective action when needed to ensure program effectiveness

THE NAZ GEOGRAPHIC ZONE



3

Expand education pipeline programs and support services

Identify and expand education programs that have proven to be effective at increasing achievement for NAZ children (both in schools and through organizations). Augment effective whole-family support strategies.

- Expand effective academic-focused Out-Of-School time programs
- Continue teacher effectiveness training
- Expand Family Academy curriculum
- Secure mentoring for NAZ youth
- Implement family incentives for participation and progress
- Seed early childhood “bridge scholarships”
- Establish emergency housing fund

As a Promise Neighborhood, NAZ will significantly impact resource and service-delivery systems that touch North Minneapolis to drive transformational change for youth and families.